

Bolidtop® and Bolideck® can be found just about anywhere



### SCDC in Shanghai – 8.000 m<sup>2</sup>

SCDC is the leading Chinese institute fighting the SARS bacterium. This elusive bacterium caused a considerable number of deaths in 2004. Bolidt was asked to fit the laboratories with highly chemical-proof, seamless synthetic flooring: Bolidtop® 20626. [Read more...](#)



### Nike in Parijs – 460 m<sup>2</sup>

Bolidt has been in close contact with this American multinational for many years. It has played a part in creating stylish and functional interiors for several Nike shops, showrooms and offices. Bolidt has worked for Nike in for example Oslo, Reijkjavik and Hamburg. The showroom in Paris was recently fitted with the Bolidtop® 525. [Read more...](#)



### P&O Cruises in Miami – 1.500 m<sup>2</sup>

Bolidt is a regular guest in the world of cruise ships. Having started with HAL twenty years ago, Bolidt now supplies highly advanced synthetic systems to virtually all the shipping companies and shipyards. On board the Arcadia of P&O Cruises, our Bolidtop® Disco flooring makes for some diversion. [Read more...](#)



### Selfridges in Manchester – 5.000 m<sup>2</sup>

Selfridges changed its strategy and decided to introduce a bold style in their department stores in Birmingham, Manchester and London. Part of the operation was an upgrade of their product range. Bolidt contributed by introducing one of its design flooring systems: Bolidtop® Pearl Sensation. The floors (15,000 m<sup>2</sup> in total) strengthen the new image. [Read more ...](#)



### Hotel Puerta America in Madrid – 3.000 m<sup>2</sup>

A different architect was chosen for each floor. Partly for this reason, the hotel will be featured in quite a few architectural magazines. As it happened, Bolidt turned out to be the preferred choice for three out of the twelve floors. This confirms the concept that Bolidtop® Hotel flooring can form the basis for very distinct styles.



### Tate Modern in London – 50 m<sup>2</sup>

Inside this immense and well-known museum (designed by Herzog Architects) there is a construction looking like an enormous rhinestone out of glass, in which visitors can buy all sorts of books. Bolidt created a unique matching Bolidtop® floor which produced a perfect combination of transparent synthetic material and glass.



### Mercedes-Benz museum in Stuttgart - 6.000 m<sup>2</sup>

The total of 6,000 m<sup>2</sup> of Bolidtop® Museum flooring will serve as an exhibition ground for every type of car that has played a part of any significance in the past. The UN Studio architects came up with many ideas to do justice to for instance the well-known Mercedes 180 D. In addition to the flooring, Bolidt supplied Boligrip® wearing courses.

Bolidtop® and Bolideck® can be found just about anywhere



### Philips High Tech Campus in Eindhoven – 11.000 m<sup>2</sup>

The chemical-proof and conductive Bolidtop® Stato 20626 is the favourite flooring solution. On the prestigious High-Tech Campus, Philips is building clean rooms in which the company plans to realize important breakthroughs in the field of electronics. The special requirement in this 11,000 m<sup>2</sup> project is absolute evenness. [Read more...](#)



### Children's hospital in Bochum – 2.000 m<sup>2</sup>

Hospitals in Germany also opt in favour of Bolidtop® Hospital flooring these days. From a functional point of view, our flooring offers major advantages over prefab flooring like PVC and linoleum. As for aesthetics, it is regrettably not a widely known fact that the human mind is the limiting factor in the design of hospital flooring. Fortunately, this case provides an opening for change. [Read more...](#)



### Philip Morris in St. Petersburg – 45.000 m<sup>2</sup>

Bolidt has special bonds with this cigarette manufacturer. We follow the company throughout the world. This time, Bolidt was asked to install 45,000 m<sup>2</sup> of Bolidtop® 700 in Russia within six weeks time. 450 tonnes of liquid material were transformed into one beautiful, even and strong floor.



### Hongta in Shenzhen – 44.000 m<sup>2</sup>

Bolidt has entered the Chinese mainland. For Hongta it applied industrial flooring in a magnificent new development. We are not talking about small surface areas here either: in two stages, 44,000 m<sup>2</sup> of concrete was fitted with Bolidtop® 700.



### Efes Beer in Ankara – 3.100 m<sup>2</sup>

Beer producers set strict requirements for the floor in their brewery. The challenge is to strike the right balance between antiskid properties and cleanability. The mechanical and chemical loads are high. Forklift trucks driving around with wooden pallets and protruding nails. Sugars being converted into very aggressive liquids and steam releases affecting the floor. Bolidt developed a purpose-made Bolidtop® 700 that will rise to the occasion. [Read more...](#)



### Auschwitz museum in Auschwitz – 550 m<sup>2</sup>

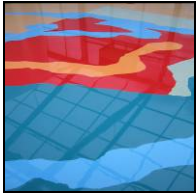
This project is charged with emotion. WW II was ended exactly 60 years ago. It was the first time for the twin town of Hendrik Ido Ambacht (Bolidt's place of business and place of residence of its management) to receive the municipal executive of Bergen Belsen. Bolidt considered it an honour to apply Bolidtop® 525 in Auschwitz. A project that left a lasting impression...



### Coca Cola in Izmir – 1.300 m<sup>2</sup>

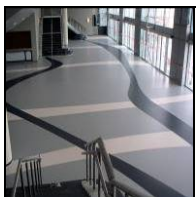
Coca Cola has had ample experience with Bolidt. This time, the synthetic resin based flooring system Bolidtop® 700 was selected to give a functional facelift to the bottling plant in Izmir. Bottles of Sprite, Fanta and Coca Cola have now taken over the 1,300 m<sup>2</sup> floor. [Read more...](#)

Bolidtop® and Bolideck® can be found just about anywhere



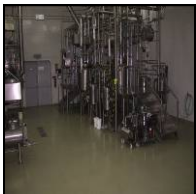
### **Bayer in Leverkusen – 400 m<sup>2</sup>**

The entire staff of Bayer Material Science took a lively interest in the Bolidtop® Sensation system at the National Garden Show in Leverkusen. Next spring, hundreds of thousands of visitors will walk this floor. Bayer was a sponsor of the Artwalk® concept, for which Bolidt does pioneering work. The Bolidtop® Design Team that applies the Design flooring systems all over the world, also made a point of coming over for the occasion. [Read more ...](#)



### **Al Sadd Sports Club in Qatar – 5.000 m<sup>2</sup>**

Modern stadiums are no longer just built for sports events. A soccer match on Saturday, a pop concert on Tuesday, just about everything is possible in the present-day arena. The highest standards apply when it comes to accessibility, appeal, comfort and security. [Read more ...](#)



### **Medochemie in Larnaka – 8.000 m<sup>2</sup>**

Medochemie is one example of a customer who always comes back to us after expansion plans have been drawn up. More than 8,000 m<sup>2</sup> of Pharmaterrazzo has been supplied to this leading pharmaceuticals company in Cyprus over the past years. [Read more ...](#)



### **Stratosphere Tower Hotel in Las Vegas – 1.500 m<sup>2</sup>**

Together with its partner Fusion Floors Bolidt has materialized a very special result in this world-famous hotel, which happens to be the highest building west of the Mississippi. [Read more ...](#)



### **Oribe hair salon in Miami – 150 m<sup>2</sup>**

Even Jennifer Lopez does business with Bolidt and Fusion. She had them fit her hair salon with Glitz flooring. "Glamour and glitter" has always been the American way. The other salons in J. Lo's chain will probably follow.



### **Bolidroom in action**

Bolidroom is in top gear. The design lab produces a constant stream of refreshing designs and ideas. A whole range of designers has visited our interior designer. Among the results were synthetic lamps, synthetic chairs, synthetic coffins, floor designs, a special coating and Corten® and Ode® flooring. [Read more ...](#)

These are only a few selections from Bolidt Synthetic Applications' world-wide projects. Bolidt has developed internet sites per market segment which can be found under <http://ebrochure.bolidt.com>. Here you can have a look at segment-specific references, develop a sense of the material and get an idea of prices.